








WHAT IS THE STUDY?

-  Evaluating capacity improvements on I-10 from SR 51 to the Santan Freeway
-  Preparing a Design Concept Report (DCR), Environmental Impact Statement (EIS) and Implementation Plan
-  Obtaining a Record of Decision from FHWA

THE PROJECT IS:

-  Funded in Phase I of Regional Transportation Plan (2006 – 2010) and;
-  Programmed with a Budget of \$550 Million





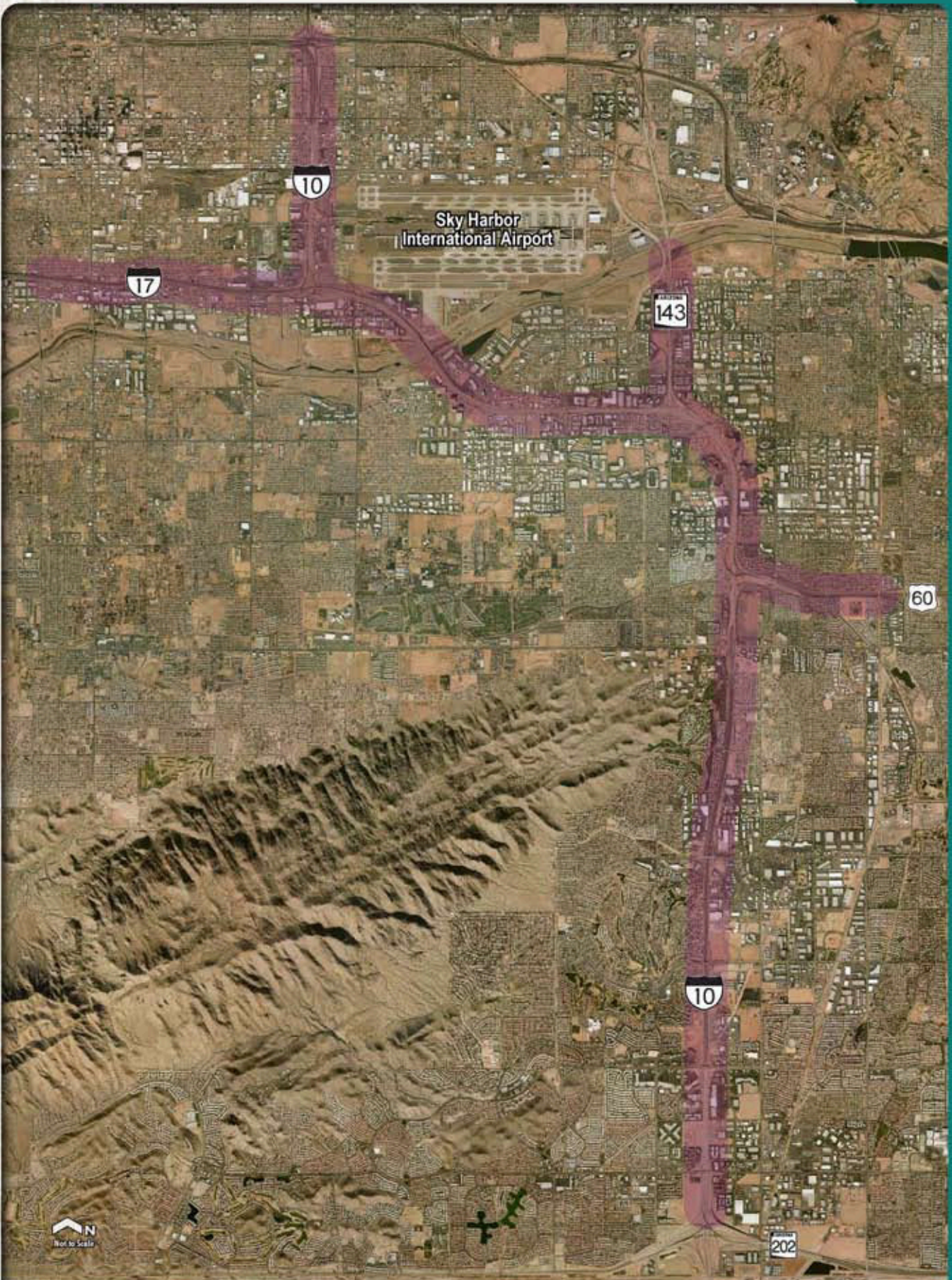
I-10 Corridor Improvement Study



PROJECT AREA AERIAL MAP



Federal Highway Administration

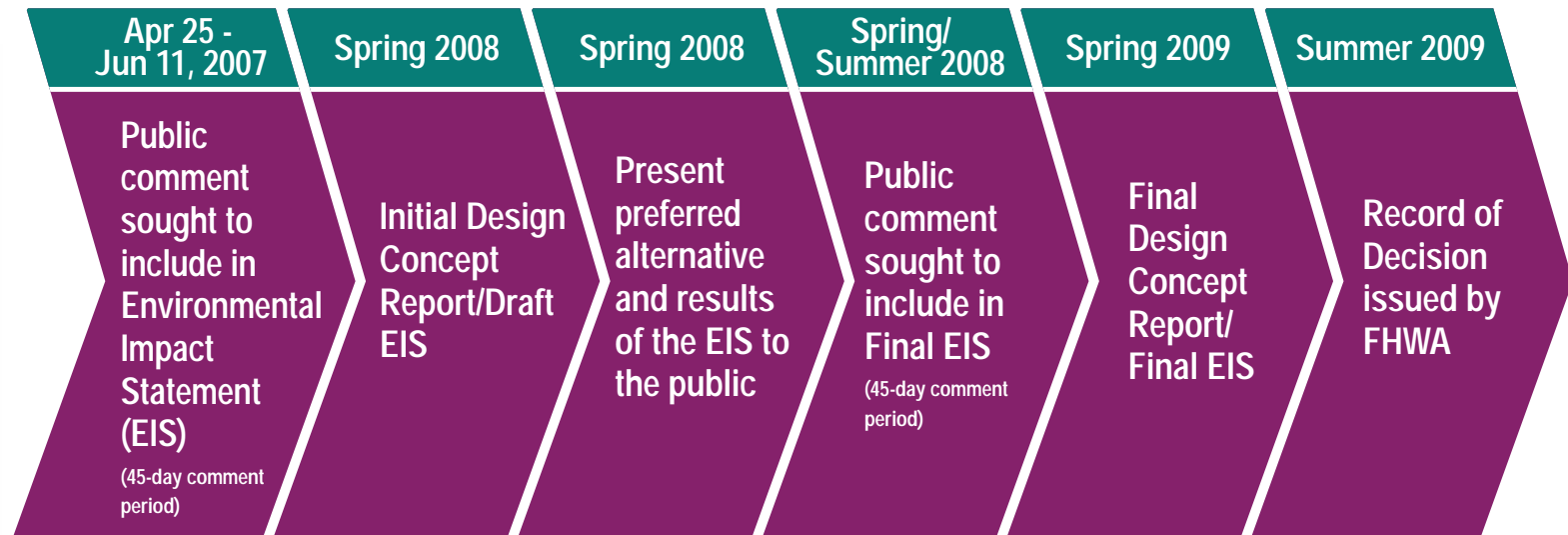
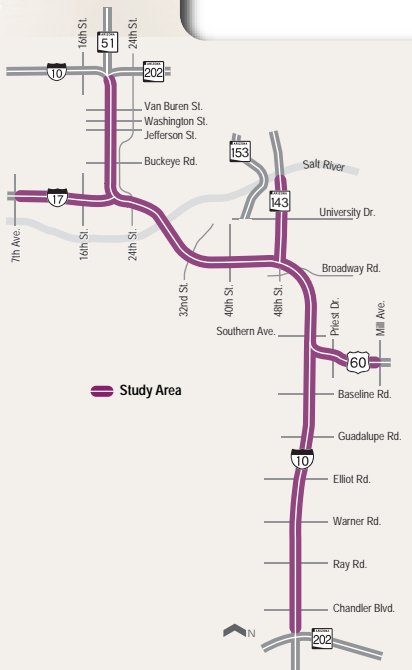
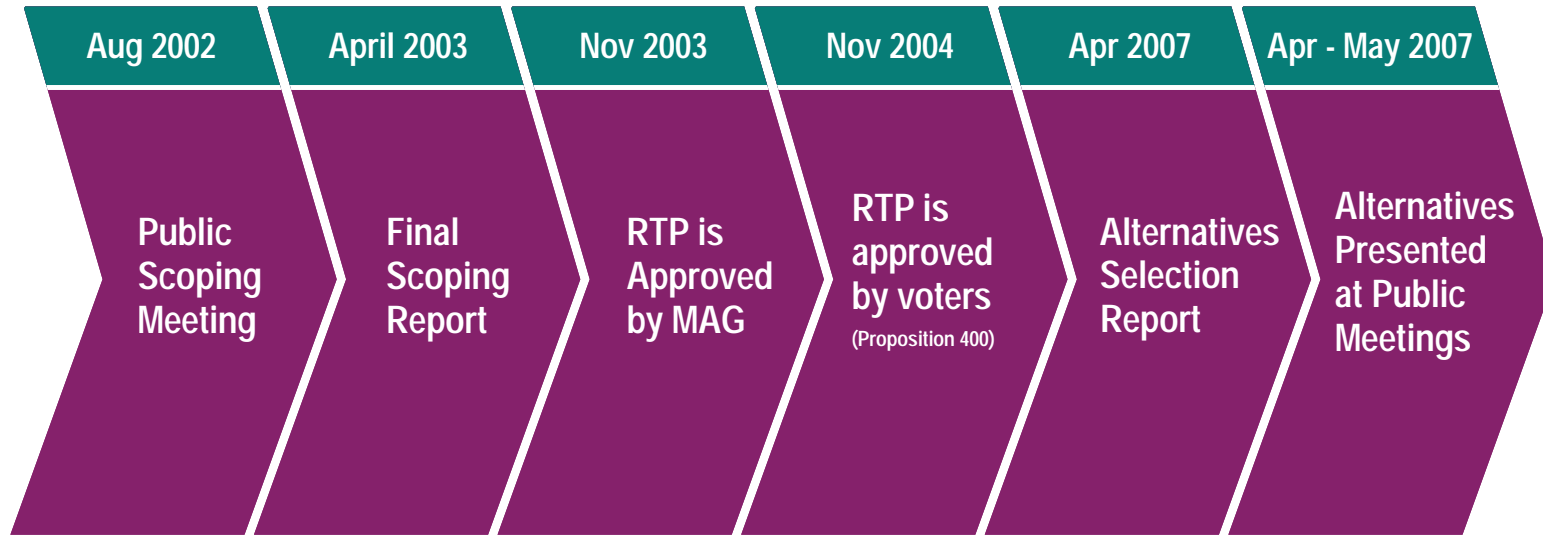




I-10 Corridor Improvement Study



PROJECT TIMELINE





I-10 Corridor Improvement Study



I-10

TRAFFIC CONDITIONS



Federal Highway Administration

vpd = vehicles per day	I-17 to 32nd St	Broadway Curve	Elliot Rd to Ray Rd
Existing Conditions	290,000 vpd	297,000 vpd	145,000 vpd
2030 No-Build	300,000 vpd	320,000 vpd	185,000 vpd
Express/Local Lanes Concept	400,000 vpd	430,000 vpd	250,000 vpd

Source: MAG Travel Demand Model, including all improvements identified in the RTP

