



# South Mountain Freeway Study

March 29, 2010

Citizens Advisory Team Meeting

South Mountain Community College  
Student Union



# Agenda

| Agenda Topic                                                                                                                                                                                    | Discussion Lead(s)                                                           | Expected Outcome(s)                                                                                                                                                                                                                                       | Action Item(s)                                        | Time      |
|-------------------------------------------------------------------------------------------------------------------------------------------------------------------------------------------------|------------------------------------------------------------------------------|-----------------------------------------------------------------------------------------------------------------------------------------------------------------------------------------------------------------------------------------------------------|-------------------------------------------------------|-----------|
| <ul style="list-style-type: none"> <li>Welcome and introductions</li> <li>SMCAT role and responsibilities</li> <li>SMCAT communication process</li> <li>SMCAT questions and comments</li> </ul> | <ul style="list-style-type: none"> <li>Tom Keller</li> </ul>                 | <ul style="list-style-type: none"> <li>Introductions of all new participants (if any)</li> <li>Discussion about the SMCAT communication process</li> <li>Ask questions/clarification on issues, articles, press information since last meeting</li> </ul> | <ul style="list-style-type: none"> <li>N/A</li> </ul> | 6:00 p.m. |
| <ul style="list-style-type: none"> <li>Update to South Mountain Freeway Draft EIS and Design Concept</li> </ul>                                                                                 | <ul style="list-style-type: none"> <li>Mike Bruder and Ben Spargo</li> </ul> | <ul style="list-style-type: none"> <li>Knowledge of the proposed changes to the freeway concept</li> <li>Knowledge of the relation of the proposed freeway to neighborhoods, businesses, and other environmental features</li> </ul>                      | <ul style="list-style-type: none"> <li>TBD</li> </ul> |           |
| <ul style="list-style-type: none"> <li>Public Outreach and GRIC Coordination Update</li> </ul>                                                                                                  | <ul style="list-style-type: none"> <li>Tim Tait</li> </ul>                   | <ul style="list-style-type: none"> <li>Knowledge of ongoing coordination efforts with GRIC</li> </ul>                                                                                                                                                     | <ul style="list-style-type: none"> <li>TBD</li> </ul> |           |
| Break                                                                                                                                                                                           |                                                                              |                                                                                                                                                                                                                                                           |                                                       |           |
| <ul style="list-style-type: none"> <li>Next Steps - Draft EIS Review Process and SMCAT Process</li> </ul>                                                                                       | <ul style="list-style-type: none"> <li>Tim Tait</li> </ul>                   | <ul style="list-style-type: none"> <li>Knowledge of proposed process</li> </ul>                                                                                                                                                                           | <ul style="list-style-type: none"> <li>TBD</li> </ul> |           |
| <ul style="list-style-type: none"> <li>Visitor comment session</li> </ul>                                                                                                                       | <ul style="list-style-type: none"> <li>Tom Keller</li> </ul>                 | <ul style="list-style-type: none"> <li>Questions/comments documented and addressed or added to future parking lot issues memorandum</li> </ul>                                                                                                            | <ul style="list-style-type: none"> <li>TBD</li> </ul> |           |
| Adjourn                                                                                                                                                                                         |                                                                              |                                                                                                                                                                                                                                                           |                                                       | 8:00 p.m. |



# Welcome and Introductions

- Facilitators
  - Tom Keller, KCA
  - Fred Erickson, KCA
- MAG
- ADOT
- FHWA

# Welcome Visitors

- Blue question cards are to be used for your questions
- All of the SMCAT meeting materials can be found on the study Web site:
  - [www.SouthMountainFreeway.com](http://www.SouthMountainFreeway.com)
  - Click on “Citizens Advisory Team” on the homepage (quick link on right panel)
  - Updated maps under “Library”



# SMCAT Membership

| Organization                                | First Name | Last Name   |
|---------------------------------------------|------------|-------------|
| Ahwatukee Foothills Chamber of Commerce     | Carola     | Tamarkin    |
| Ahwatukee Village Planning Committee        | Paul       | Everett     |
| Arizona Public Health Association           | Al         | Brown       |
| Arlington Estates HOA                       | Camilo     | Acosta      |
| Calabrea HOA                                | Brian      | Smith       |
| City of Avondale                            | Carnell    | Thurman     |
| Cottonfields Community HOA                  | Timmothy   | Stone       |
| Estrella Village Planning Committee         | Peggy      | Eastburn    |
| Foothills Club West HOA                     | Michael    | Hinz        |
| Foothills Reserve HOA                       | Jim        | Wesley      |
| Gila River Indian Community                 |            |             |
| Kyrene School District                      | Karin      | Smith       |
| Lakewood HOA                                | Chris      | Boettcher   |
| Laveen Citizens for Responsible Development | Laurie     | Prendergast |
| Laveen Village Planning Committee           | Wes        | Lines       |
| Maricopa County Farm Bureau                 | Clayton    | Danzeisen   |
| Mountain Park Ranch HOA                     | Diane      | Krecker     |
| Pecos Road/I-10 Landowners Association      | Nathaniel  | Percharo    |
| Phoenix Mountains Preservation Council      | Michael    | Goodman     |
| Sierra Club                                 | Sandy      | Bahr        |
| South Mountain Village Planning Committee   | Tamala     | Daniels     |
| South Mountain/Laveen Chamber of Commerce   |            |             |
| Southwest Valley Chamber of Commerce        | Woody      | Thomas      |
| The Foothills HOA                           | Chad       | Blostone    |
| Valley Forward                              | Steven     | Barclay     |



# SMCAT Purpose Statement

The South Mountain Citizens Advisory Team (SMCAT) will **provide a forum for communication** between the Arizona Department of Transportation (ADOT), Federal Highway Administration (FHWA) and the local community regarding the proposed South Mountain Freeway.

The SMCAT is a **voluntary advisory team, not a decision-making body**, and it will not be responsible for decisions made by the State of Arizona or the FHWA. The SMCAT **will meet regularly to review project status and provide input on issues** that are relevant to the project.

The single purpose of the SMCAT is to provide a **Build** or **No-Build** recommendation for the South Mountain Freeway.



# SMCAT Meeting Protocol

- Welcome and introductions
- Establish a quorum
- Agenda
- Timekeeping process
- Standards for behavior notification
- “Discussion, debate, recommend” process
- Welcome visitors
- Parking lot issues
- Breaks

# SMCAT Behavior

- SMCAT members are expected to treat each other with mutual courtesy, respect and dignity.
- Since the SMCAT is a voluntary advisory team, it is important that individual SMCAT members abide by accepted standards of behavior.
- Unacceptable or disruptive behavior will not be tolerated and will be grounds for exclusion from further participation in SMCAT activities.
- Any SMCAT member who acts disrespectfully toward other members, disrupts the SMCAT process or is unable to attend meetings on a consistent basis may be required by the third party facilitator, the ADOT public involvement team or a majority of the other SMCAT members, to leave or resign from the SMCAT.



# Session Feedback Forms

**SMCAT Members:** Please complete **both sides** of the Session Feedback forms and return them before you leave.

Thank You.

# Project Coordination

**ADOT coordinates with the following agencies regarding this study.**



**City of Avondale**



**City of Tolleson**



**City of Chandler**



**Council on  
Environmental Quality**



**City of Goodyear**



**Federal Highway  
Administration (FHWA)**



**City of Phoenix**



**Gila River Indian  
Community (GRIC)**

# Project Coordination

ADOT coordinates with the following agencies regarding this study.



**Maricopa Association of Governments (MAG)**



**U.S. Bureau of the Census**



**Maricopa County**



**U.S. Department of Labor**



**National Register of Historic Places (NRHP)**



**Office of Federal Housing Enterprise Oversight**



**Bureau of Indian Affairs**



**Western Area Power Administration**



# Update to South Mountain Freeway Draft EIS and Design Concept

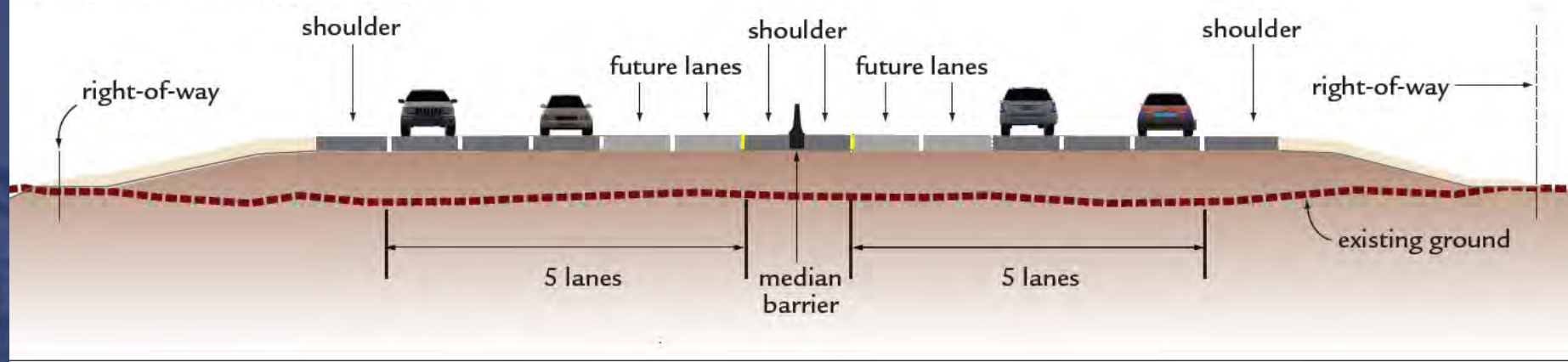
Mike Bruder, ADOT  
Ben Spargo, HDR

# Revisions to Project Scope

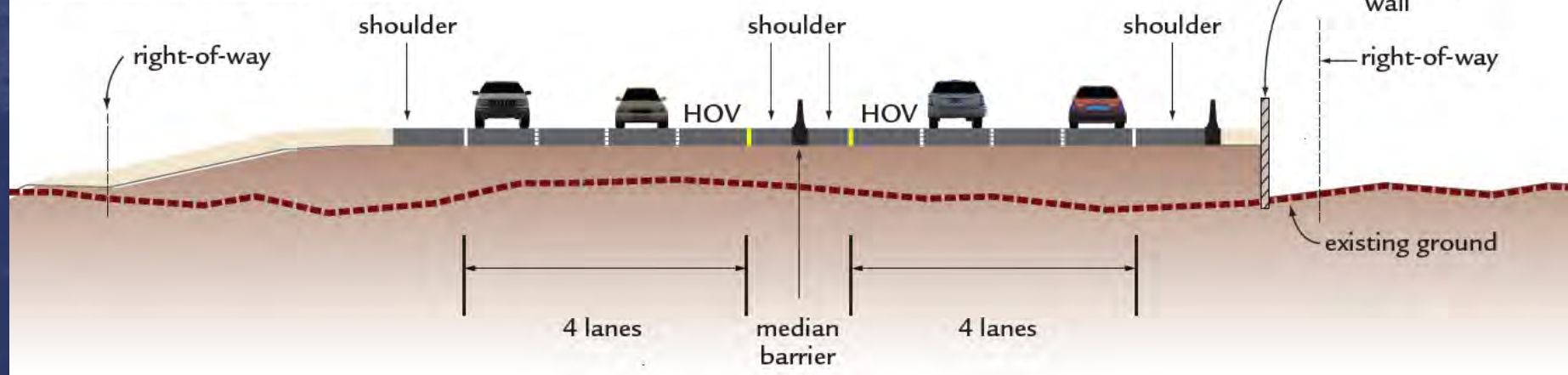
- Minimize right-of-way throughout corridor
  - Use 8-lane configuration instead of 10-lane
  - Use retaining walls where cost analysis shows them to be less expensive than right-of-way
- Shift alignment at I-10 (Papago Freeway)
  - Connect at 59th Avenue
  - Use 59th Avenue right-of-way and convert 59th Avenue to one-way frontage roads
- Construct all lanes at one time

# Freeway Concept

## 10-lane right-of-way



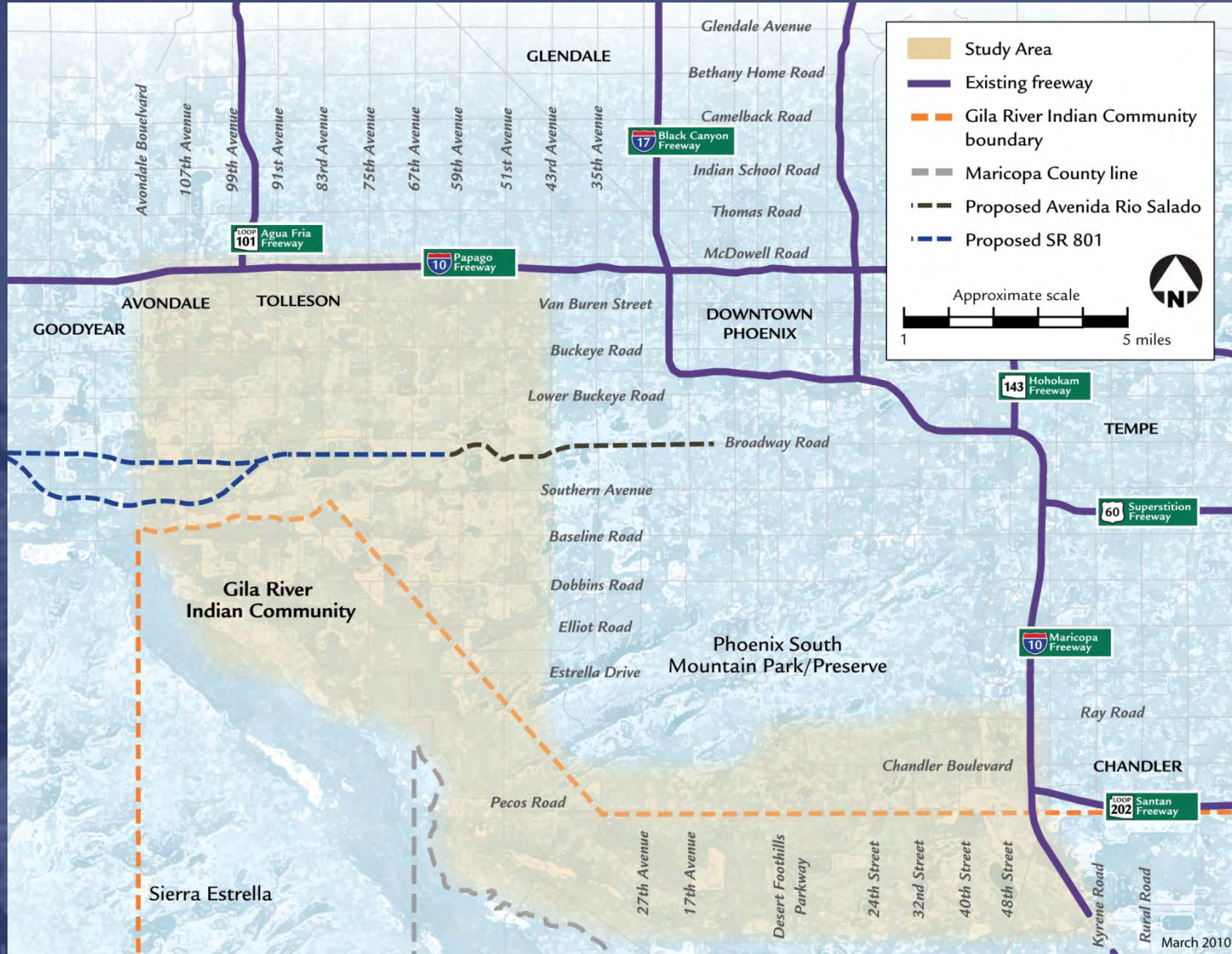
## 8-lane right-of-way



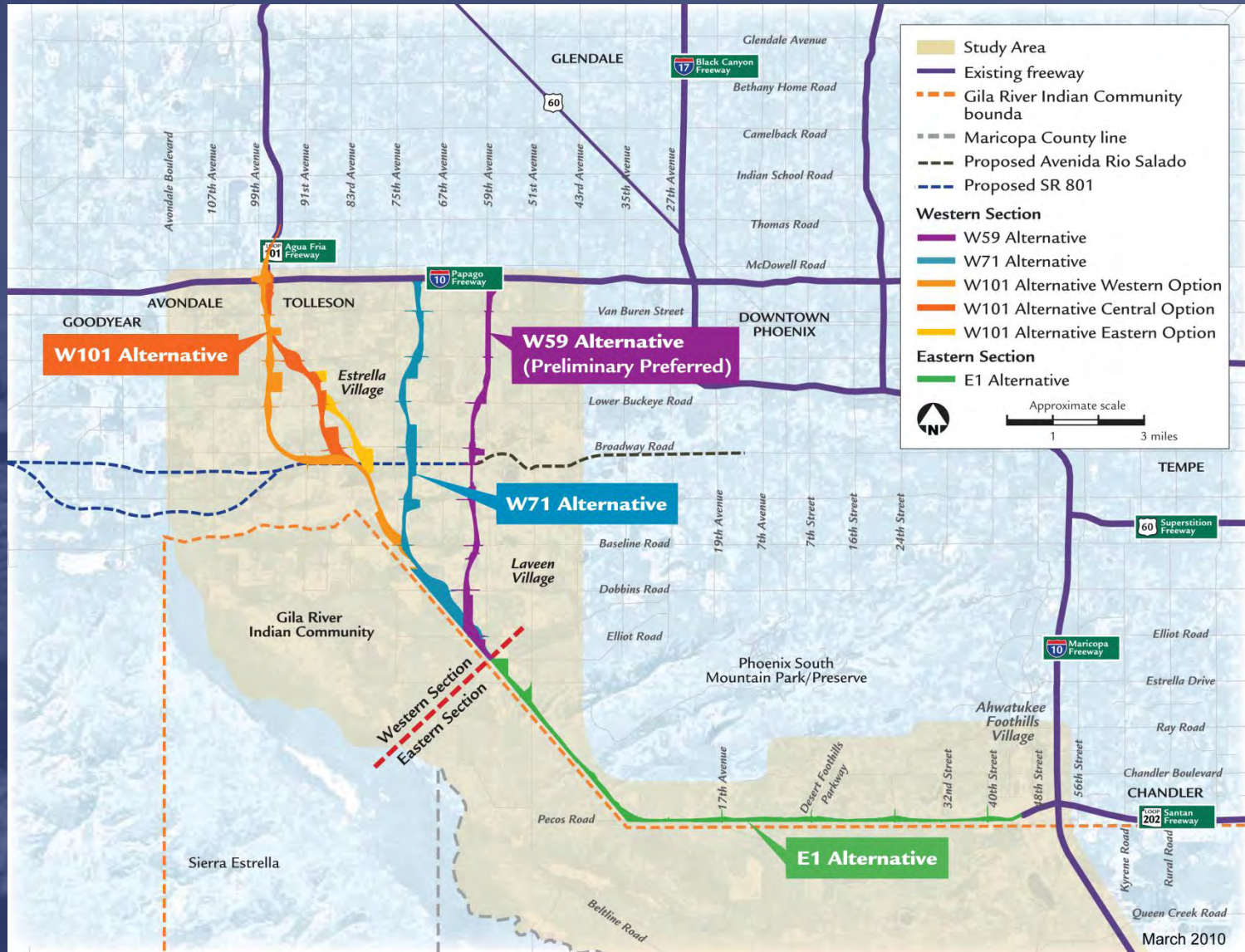
# Draft EIS Update

- Right-of-way footprints were updated for the 8-lane concept for all action alternatives (E1, W59, W71, and W101 and Options)
- Traffic model projections were updated for the 8-lane concept for all action alternatives (E1, W59, W71, and W101 and Options)

# No Build Alternative



# Build Alternatives





# Draft EIS Update

- Confirm purpose and need for the proposed 8-lane concept

- Update impacts analysis

**Agricultural Lands**

**Air Quality**

**Cost**

**Cultural Resources**

**Displacements**

**Environmental Justice**

**Hazardous Materials**

**Historic/Public Park/  
Recreation Properties  
(Section 4(f))**

**Local Land Use Plans**

**Noise**

**Public and Jurisdictional  
Acceptability**

**Residential & Business**

**Secondary and Cumulative  
Impacts**

**Socioeconomics**

**Threatened and**

**Endangered Species**

**Traffic Operations and  
Highway Design Standards**

**Utilities**

**Visual Resources**

**Water Resources**

- Confirmed W59 Alternative as the preliminary preferred alternative

# Design Concept Update

- Reviewed previous analysis and confirmed conclusions and recommendations with an 8-lane freeway
- Other design changes
  - Additional coordination with proposed State Route 801 Freeway
  - Additional railroad and utility coordination with agencies working in the Salt River area
  - Additional optimization of right-of-way takes
  - Development of mitigation measures and enhancements



# Area and Displacements

| Alternative            | Total Acres           | Potential Relocations |                     |         |                    |   |
|------------------------|-----------------------|-----------------------|---------------------|---------|--------------------|---|
|                        |                       | Business              | Single Family Homes | Lots    | Multi-Family Units |   |
| <b>Western Section</b> |                       |                       |                     |         |                    |   |
| W101 Western Option    | 10 lanes <sup>1</sup> | 1305-1318*            | 3                   | 175     | 53                 | 0 |
|                        | 8 lanes <sup>2</sup>  | 1307-1311             | 18-32               | 595-596 | 326-327            | 0 |
| W101 Central Option    | 10 lanes              | 1315-1327             | 6                   | 173     | 194                | 0 |
|                        | 8 lanes               | 1284-1289             | 17-30               | 764     | 350                | 0 |
| W101 Eastern Option    | 10 lanes              | 1326-1338             | 5                   | 199     | 323                | 0 |
|                        | 8 lanes               | 1299-1304             | 17-29               | 193     | 447                | 0 |
| W71                    | 10 lanes              | 1067                  | 10                  | 165     | 543                | 0 |
|                        | 8 lanes               | 1061                  | 28                  | 705     | 120                | 0 |

<sup>1</sup> Displacements associated with the 10-lane freeway were estimated through the use of aerial photography, flown in 2006, supplemented by field observations during 2006.

<sup>2</sup> Displacements associated with the 8-lane freeway were estimated through the use of aerial photography, flown in 2009, supplemented by field observations during 2009.

\* W101 Alternative and Options include ranges because of design options



# Area and Displacements

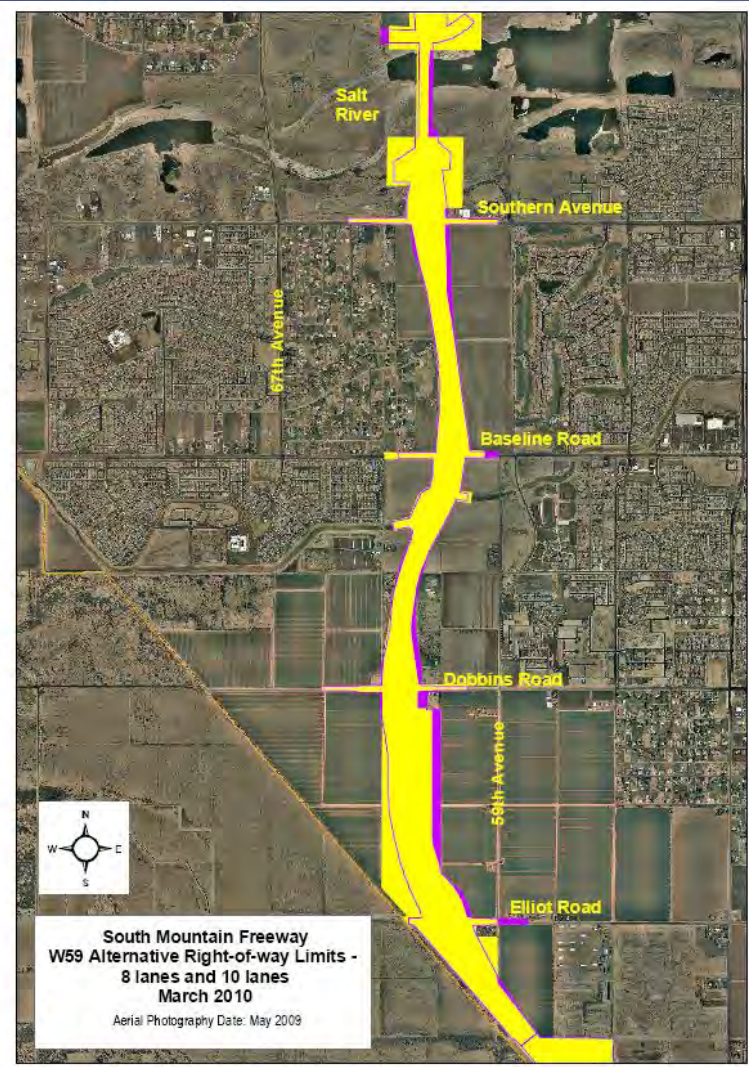
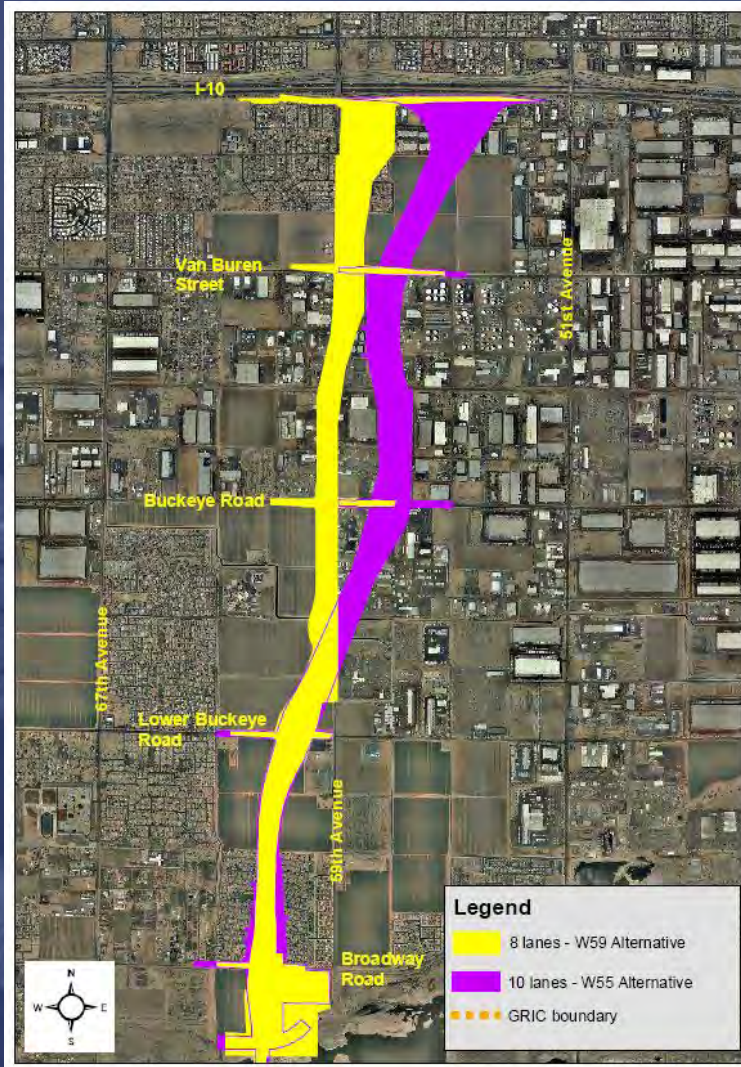
| Alternative                 |          | Total Acres | Potential Relocations |                     |      |                    |
|-----------------------------|----------|-------------|-----------------------|---------------------|------|--------------------|
|                             |          |             | Business              | Single Family Homes | Lots | Multi-Family Units |
| <b>Western Section</b>      |          |             |                       |                     |      |                    |
| W55 – 10 lanes <sup>1</sup> |          | 839         | 119                   | 48                  | 0    | 0                  |
| W59* – 8 lanes <sup>2</sup> |          | 800         | 42                    | 67                  | 0    | 680                |
| <b>Eastern Section</b>      |          |             |                       |                     |      |                    |
| E1                          | 10 lanes | 897         | 1                     | 287                 | 29   | 0                  |
| E1                          | 8 lanes  | 838         | 1                     | 120                 | 17   | 0                  |

<sup>1</sup> Displacements associated with the 10-lane freeway were estimated through the use of aerial photography, flown in 2006, supplemented by field observations during 2006.

<sup>2</sup> Displacements associated with the 8-lane freeway were estimated through the use of aerial photography, flown in 2009, supplemented by field observations during 2009.

\* Preliminary Preferred Alternative

# W59 Alternative Right-of-way Changes





# W59 and E1 Alternatives

- Corridor Aerial Plots



# Public Outreach and Gila River Indian Community Coordination Update

# Public Outreach Efforts

- Updated Web site: January 2010
- Distributed 65,000 newsletters to study area: February 2010
- Held W59 public information meeting: February 10, 2010
- Laveen BBQ: February 21, 2010





# W59 Public Information Mtg.

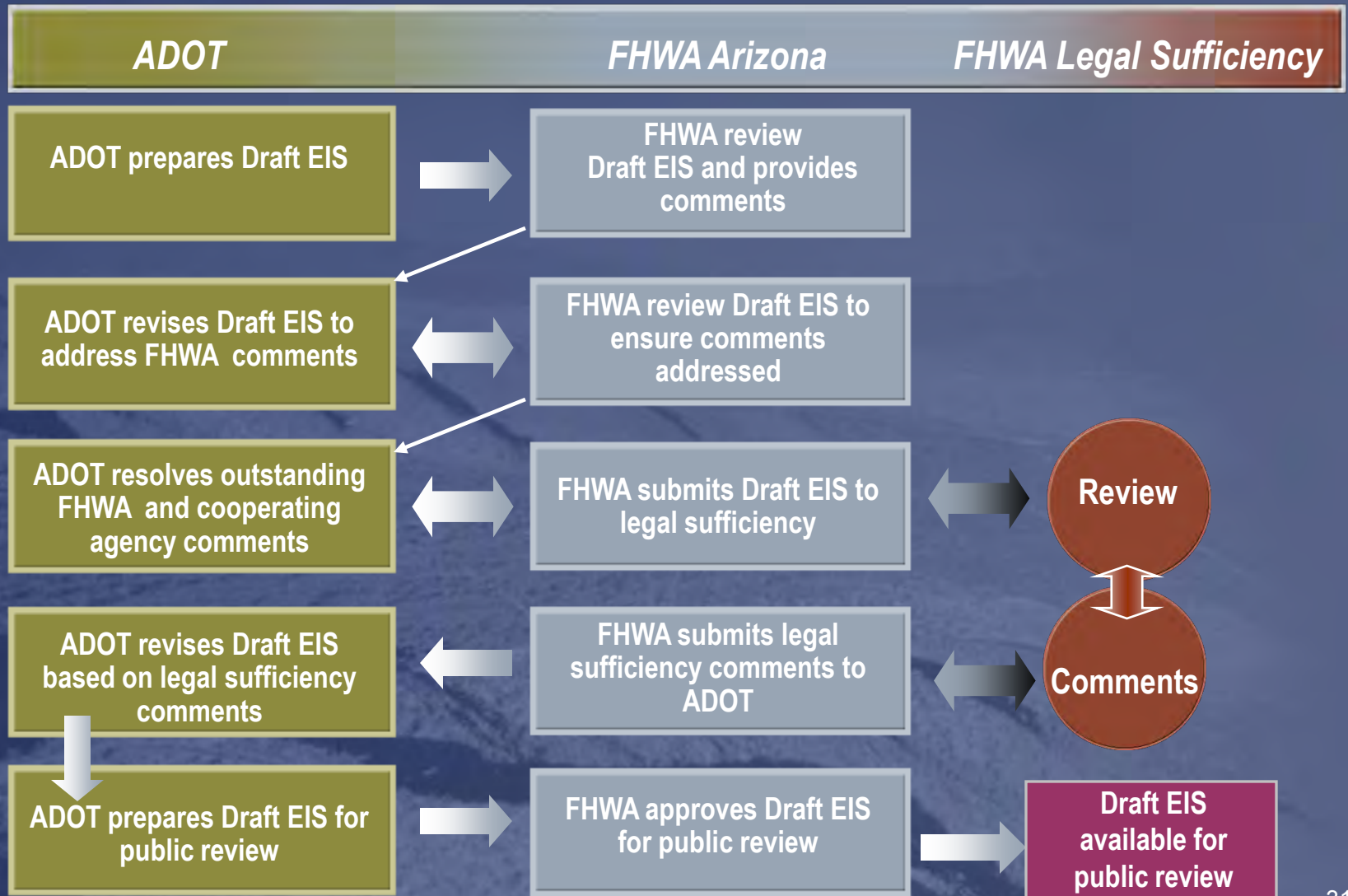
- Notification:
  - 4500 postcards were distributed to businesses and residences
  - Newspaper notices were posted in 4 publications (English and Spanish)
  - Bilingual doorhangers were distributed to homes and apartment complexes
- Outcome:
  - 93 individuals attended
  - Comments addressed included concerns regarding residential and business impacts, acquisition and relocation process, study schedule, environmental studies (e.g., air quality and noise), local street access, funding, GRIC coordination, costs and traffic

# GRIC Coordination

**Break**

# Next Steps

# Draft EIS Review Process





# TENTATIVE SMCAT Meeting Process & Topics

| Subject                               | Topic(s)                                                                                                                                                                                                               |
|---------------------------------------|------------------------------------------------------------------------------------------------------------------------------------------------------------------------------------------------------------------------|
| W59 & E1 Alternative Update           | <ul style="list-style-type: none"><li>• Reduced Footprint &amp; Associated Changes</li><li>• Western Section Alignment Shift</li></ul>                                                                                 |
| Air Quality Panel                     | <ul style="list-style-type: none"><li>• Air Quality (Non-Project Specific)</li></ul>                                                                                                                                   |
| Draft EIS for Public Review & Comment |                                                                                                                                                                                                                        |
| Draft EIS Open Discussion             | <ul style="list-style-type: none"><li>• SMCAT Discussion Draft EIS</li><li>• Air Quality Discussion (Project Specific)</li><li>• Mitigation Discussion</li><li>• Action vs. No-Action Alternative Discussion</li></ul> |
| Public Hearing                        | <ul style="list-style-type: none"><li>• Draft EIS</li></ul>                                                                                                                                                            |
| SMCAT Recommendation                  | <ul style="list-style-type: none"><li>• SMCAT Recommendation Regarding Action vs. No-Action Alternatives</li></ul>                                                                                                     |
| End of Public Comment Period          |                                                                                                                                                                                                                        |



# Recommended Air Quality Panel Members

| Specialty                | Agency/Organization                         | Name             |
|--------------------------|---------------------------------------------|------------------|
|                          | Arizona Department of Environmental Quality | Ira Domsky       |
|                          | Arizona State University                    | Peter Hyde       |
|                          | Desert Research Institute                   | Dave DuBois      |
| Air Quality              | Environmental Protection Agency             | TBD              |
| Modeling                 | Federal Highway Administration              | Michael Claggett |
| Policy                   |                                             | Jeff Houk        |
| Health Impacts           | Health Effects Institute                    | Debra Kaden      |
| Policy                   | MAG                                         | Lindy Bauer      |
| Valley Standards         | Maricopa County Air Quality Department      | Ben Davis        |
| Weather Patterns         | National Weather Service                    | Ken Waters       |
| Mobile Source Air Toxins | Sonoma Technology                           | TBD              |
| Air Quality              | VSI Environmental                           | Dennis Haase     |



# SMCAT Questions & Comments



# Visitor Questions



# Session Feedback Forms and Questions from the Public (time permitting)

**SMCAT Members:** Please complete **both sides** of the Session Feedback forms and return them before you leave.

Thank You.



# Motion to Adjourn

# Additional Slides

# W71 Alternative Right-of-way Changes



# W101 Alternative Right-of-way Changes

