

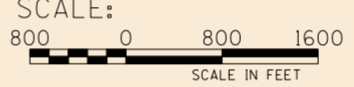
ESTRELLA VILLAGE

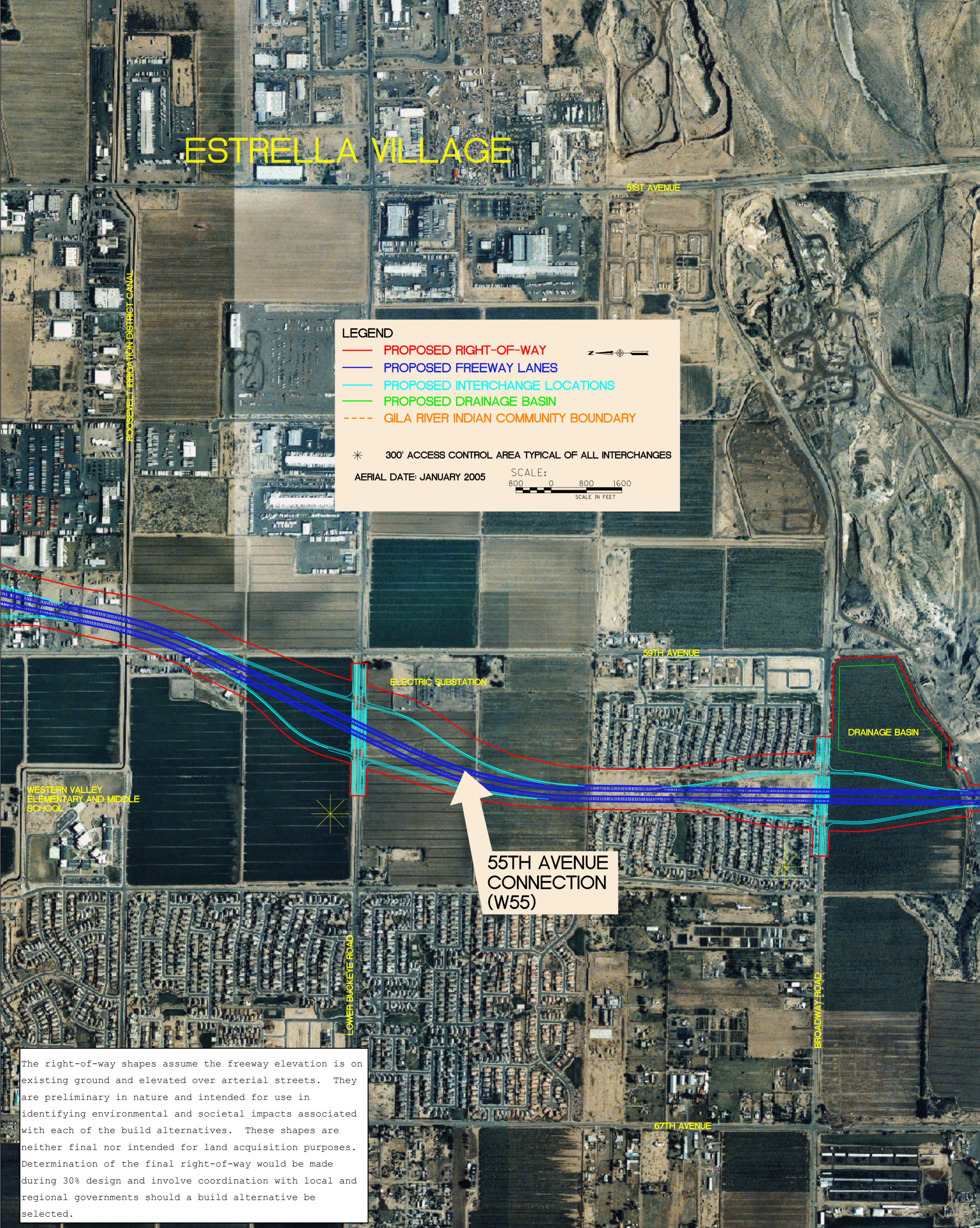
LEGEND

- PROPOSED RIGHT-OF-WAY
- PROPOSED FREEWAY LANES
- PROPOSED INTERCHANGE LOCATIONS
- PROPOSED DRAINAGE BASIN
- GILA RIVER INDIAN COMMUNITY BOUNDARY

* 300' ACCESS CONTROL AREA TYPICAL OF ALL INTERCHANGES

AERIAL DATE: JANUARY 2005

SCALE:

 SCALE IN FEET



55TH AVENUE CONNECTION (W55)

The right-of-way shapes assume the freeway elevation is on existing ground and elevated over arterial streets. They are preliminary in nature and intended for use in identifying environmental and societal impacts associated with each of the build alternatives. These shapes are neither final nor intended for land acquisition purposes. Determination of the final right-of-way would be made during 30% design and involve coordination with local and regional governments should a build alternative be selected.